

Wakaria (What's Up)

Intro

Musical notation for the Intro section, measures 1-4. The key signature has one flat (Bb) and the time signature is 12/8. The melody consists of eighth and quarter notes.

A

Musical notation for section A, measures 5-8. Measure 5 starts with a '5' below the staff. The melody continues with eighth and quarter notes, including some rests.

Musical notation for section A, measures 9-12. The melody continues with eighth and quarter notes.

Musical notation for section A, measures 13-16. The melody continues with eighth and quarter notes.

Bridge

Musical notation for the Bridge section, measures 17-20. Measure 17 starts with a '17' below the staff. The melody features eighth and quarter notes.

Musical notation for the Bridge section, measures 21-24. The melody continues with eighth and quarter notes.

Musical notation for the Bridge section, measures 25-28. The melody continues with eighth and quarter notes.

Musical notation for the Bridge section, measures 29-32. The melody continues with eighth and quarter notes.

Bridge

Musical notation for the Bridge section, measures 33-36. Measure 33 starts with a '33' below the staff and includes a 'ham.' (hammer-on) marking. The melody continues with eighth and quarter notes.

B E

Musical notation for section B, measures 37-40. Measure 37 starts with a '37' below the staff. The melody consists of sustained notes (half notes).

Musical notation for section B, measures 41-44. Measure 41 starts with a '41' below the staff. The melody consists of sustained notes, with a 'C7' chord marking above the staff in measure 43.

A

45



49



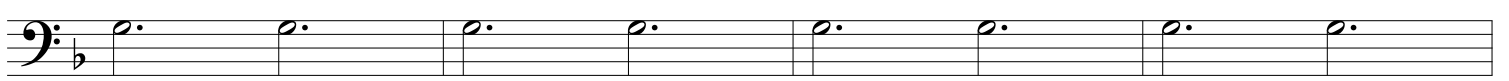
53



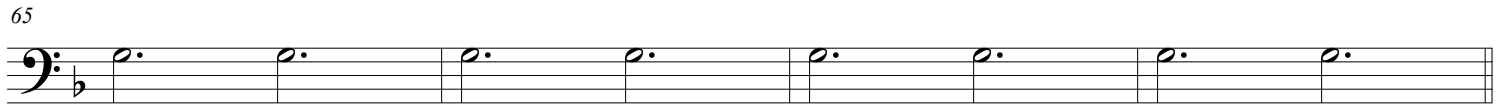
57

**B**

61

G

65



69



73

**A**

77



81



85



89



solo trumpet solo

93

97

101

105

A

109

113

117

Bridge

121

B G sax solo

125

129

133

137

141

145

149

151

155

159

161

165

169

171

175

179

183